

Exterior Parkside Vinyl Siding



With a large color selection and a value price, Parkside vinyl siding is the ideal choice for homeowners who appreciate the traditional look of Dutch lap siding.

Parkside vinyl siding has a deep wood grain finish that resembles cedar siding. Color-through technology minimizes the appearance of scratches. The roll-over nail hem maximizes the panel's resistance against strong winds. Offered in Double 4.5" Dutch lap profile, with a 1/2" projection. Panel thickness is .038". Limited Lifetime Warranty



Panel length- 12'
2 squares, or 22 panels per carton
Sold by square only

Part Number.....10-110



*For complete warranty details, call 1-888-502-BLUE

Due to printing limitations, color representations may not be exact

Exterior Vision Pro Vinyl Siding



White

Due to printing limitations, color representations may not be exact



Panel length- 12'6"
2 squares, or 24 panels per carton
Sold by square only

Part Number.....10-129



Vision Pro vinyl siding provides the homeowner with design flexibility at an affordable price with the peace of mind that comes with the Limited Lifetime Warranty*.

Vision Pro vinyl siding has freshly painted wood grain finish that compliments a full range of architectural styles. Color-through technology minimizes the appearance of scratches. The roll-over nail hem maximizes the panel's resistance against strong winds. Offered in Double 4" Dutch lap profile, with a 1/2" projection. Panel thickness is .040".

*For complete warranty details, call 1-888-502-BLUE

Exterior

Chatham Ridge Vinyl Siding



**Colonial Style,
An American Favorite**



Cream



Gray



Pearl



White

Due to printing limitations, color representations may not be exact



Panel length- 12' 1"
2 squares, or 22 panels per carton
Sold by square only

Part Number.....10-171



Ideal for enhancing the look of smaller homes, Chatham Ridge vinyl siding gives the impression of colonial clapboard siding with a triple narrow, 3” traditional lap profile.

Subtle, wood grain texture of Chatham Ridge vinyl siding adds detail and dimension. Color-through technology minimizes the appearance of scratches. The roll-over nail hem maximizes the panels resistance to strong winds. Panel thickness is .040”, with a 1/2” projection. Backed by a Limited Lifetime Warranty*.

*For complete warranty details, call 1-888-502-BLUE

Exterior Vinyl Siding Accessories

Vinyl Starter Strip

Use to install first layer of vinyl siding
10' length, with pre-punch nail holes
50 pieces per carton



Starter Strip..... 10-301NCB

Vinyl J-Channel

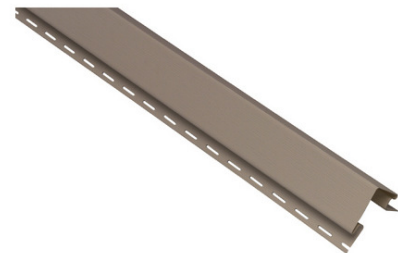
Low-gloss, wood grain finish
Available in colors to match vinyl siding
12' 6" length, pre-punched nail holes
40 pieces per carton



J-Channel..... 10-306

Vinyl Outside Corner

Low-gloss, wood grain finish
Available in colors to match vinyl siding
10' length, pre-punched nail holes
10 pieces per carton



J-Channel..... 10-371

Exterior Metal Siding



Embossed aluminum siding panels to repair or replace siding on older mobile homes.

5/8" grip-lock panel edge results in a strong, nearly seamless finished look

Also used extensively on storage buildings, RV's, travel trailers, and construction site office trailers.

Panels are 48" x 96", available in cream, gray or white

- Cream Panel..... 10-1202C**
- Gray Panel..... 10-1202LG**
- White Panel..... 10-1202W**



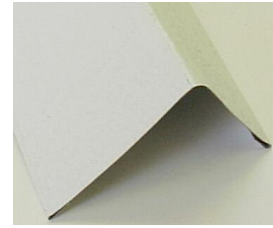
Exterior

Metal Siding Trim

Metal Outside Corner

Embossed aluminum outside corner trim
4" x 4" x 10'

Cream..... 10-1305C
White..... 10-1305W



Metal Siding Start Strip

Embossed aluminum starter strip
Use at top or bottom of vertical siding panels

4" x 12' White..... 10-1301W
6" x 12' Cream..... 10-1303C
6" x 12' White..... 10-1303W



Aluminum Mini-Gutter

Roll-formed aluminum mini-gutter
1-1/2" x 12'

Brown..... 10-1500B
Cream..... 10-1500C
Gray..... 10-1500LG
White..... 10-1500W



Aluminum Drip Rail

Extruded aluminum, mil finish
Mounting holes on 4" centers

1-1/2" x 18'..... 35-1021
1-1/4" x 14'..... 35-1019



Aluminum Awning Rail

Extruded aluminum, mil finish
Mounting holes on 4" centers
14' length

Standard Awning Rail..... 35-1020



Exterior FSI Vinyl Skirting



Detail View



FSI vinyl skirting features built-in center vents in each panel to provide critical air circulation. This helps to reduce moisture build-up and minimizes musty odors, especially when used in conjunction with a ground cover moisture barrier.

Check with your local building code to determine the specific ventilation and moisture barrier requirements for your location.

FSI FOUNDATION SYSTEMS, INC



Vinyl skirting can enhance the appearance of decks, gazebos, and practically any raised structure, while permitting proper air circulation



Skirting can easily hide hot tub footings and plumbing, and still allow convenient access to utilities.

Vinyl skirting provides a neat, trim appearance to manufactured and modular homes



Due to printing limitations, color representations may not be exact



Panels are 12 feet in length, 16 inches wide
Available single, or in cartons of 12 panels
Color matched trim kit available
Optional skirt-guard protects panel from grass trimmers

Part Number.....10-0880

FOUNDATION SYSTEMS, INC and FSI are registered trademarks of Atlantic Service and Supply, a wholly owned subsidiary of Watsco, Inc.

Exterior

Vinyl Skirting Accessories

Vinyl Skirting Trim Kit

Kit contains the following:
 14-top front trim, 14-top back trim, 14-bottom rail
 1-hardware kit
 Trim kits are color-matched to our skirting panels



Trim Kit..... 10-0885

Vinyl Skirting Hardware Kit

Kit contains 100 aluminum ground spikes,
 And 100 zinc-plated 1-inch hex head screws



Hardware Kit..... Hardware Kit

Vinyl Skirting Top Front Trim

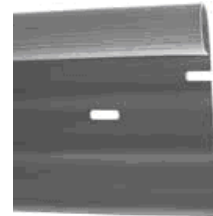
Secures the skirting panel against the top back piece
 11'2" in length
 Color-matched to our vinyl skirting panels



Top Front..... 10-0883

Vinyl Skirting Top Back Trim

Secures the skirting panel against the top front piece
 11'2" in length
 Color-matched to our vinyl skirting panels



Top Back..... 10-0882

Vinyl Skirting Bottom Rail

Provides a base to hold the bottom of the panels in place
 11'2" in length
 Color-matched to our vinyl skirting panels



Top Back..... 10-0884

Exterior Reil Rock Skirting

Reil Rock foundation skirting will provide an attractive, site-built appearance that is designed to last.

Each panel is single molding of high-impact ABS composite material that will not scratch, dent, or rattle.

Under-structure ventilation is provided by optional vent inserts.



Reil Rock Brown Panel

Brown simulated stones, with black mortar and edge

32" x 60"	10-1033B
36" x 60"	10-1035B
48" x 60"	10-10375B



Reil Rock Gray Panel

Gray simulated stones, with black mortar and edge

32" x 60"	10-1033G
36" x 60"	10-1035G
48" x 60"	10-10375G



Reil Rock Sandstone Panel

Sandstone simulated stones, with cement mortar and edge

32" x 60"	10-1033S
36" x 60"	10-1035S
48" x 60"	10-10375S



Reil Rock Black Vent

Molded from ABS material, with imbedded screen
HUD approved, 16-1/2" x 9" rough opening

Black Vent.....	10-1030
-----------------	---------



Exterior

Reil Rock Skirting Accessories

Reil Rock Sandstone Vent

Molded from ABS material, with imbedded screen
HUD approved, 16-1/2" x 9" rough opening



Sandstone Vent.....10-1030S

Reil Rock Brown Access Door

Easy access to underside of structure
Complete with keyed lock to secure door



32" x 36"..... 10-1039B

Reil Rock Gray Access Door

Easy access to underside of structure
Complete with keyed lock to secure door



32" x 36"..... 10-1039G

Reil Rock Gray Access Door

Easy access to underside of structure
Complete with keyed lock to secure door



32" x 36"..... 10-1039S

Reil Rock Black Ground Track

Embossed metal "U" track
Conceals bottom of skirting panel
12' x 1-1/2"



Black Ground Track..... 10-1040K

Reil Rock Sandstone Ground Track

Embossed metal "U" track
Conceals bottom of skirting panel
12' x 1-1/2"



Black Ground Track..... 10-1040K

Exterior Fiberglass Entrance Steps

Entrance steps from E & E Fiberglass are designed and built to exceed most federal, state, and local code requirements. From the non-skid top surfaces to the rounded edges and corners, homeowner safety is a vital concern.

Constructed from heavy-duty, pressure-treated wood, and covered with several layers of fiberglass wrap, these steps are highly resistant to moisture, insects, and decay. All metal fasteners used in the construction are hot-dip galvanized to resist corrosion.

All steps are covered by a 6-year limited warranty. Warranty details are available upon request.



Description Height x Depth x Width	Part Number	Back Rail	Code Side Rail	Economy Side Rail
2-Step 16" x 14" x 32"	12-4398E	-----	-----	12-4399E
2-Step 16" x 24" x 36"	12-4398	-----	-----	12-4399
2-Step 14" x 38" x 38"	12-4398C	12-4414	12-4399C	-----
3-Step 24" x 14" x 32"	12-4400E	-----	-----	12-4406E
3-Step 24" x 24" x 36"	12-4402	-----	-----	12-4406
3-Step 21" x 38" x 38"	12-4412C	12-4414	12-4411	-----
3-Step 24" x 38" x 38"	12-4412C8	12-4414	12-44118	-----
4-Step 32" x 14" x 32"	12-4402E	-----	-----	12-4407E
4-Step 32" x 24" x 36"	12-4403	-----	-----	12-44064
4-Step 28" x 38" x 38"	12-4413C	12-4414	12-44114	-----
4-Step 32" x 38" x 38"	12-4413C8	12-4414	12-441148	-----
5-Step 35" x 38" x 38"	12-4415C	12-4414	12-4416C	-----
5-Step 40" x 38" x 38"	12-4415C8	12-4414	12-44168	-----
6-Step 42" x 38" x 38"	12-4417C	12-4414	12-4417R	-----
7-Step 49" x 38" x 38"	12-4418C	12-4414	12-4418R	-----



Exterior Vinyl Shutters



Cathedral Top Open Louver Shutters

Durable, copolymer construction with UV stabilized color molded throughout

No paint to ever flake, chip, or peel like traditional painted surfaces

Rigid, one-piece construction offers maximum strength with no parts to work loose

Deep wood grain texture provides an authentic appearance

Open louvers allow air to circulate and prevents moisture collecting behind the shutters

Easy installation on any exterior surface

Elegant detailing and decorative colors add beauty and charm to your home

Lifetime warranty against cracking, peeling, rotting or flaking

Available in several color and size variations

9" x 28".....10-1120

12" x 28".....10-1121

12" x 43".....10-1124

12" x 55".....10-1127



Before adding vinyl shutters



After adding vinyl shutters

Due to printing limitations, color representations may not be exact



Galvanized Roof Cap

Use to cover seams when joining multi-section homes
0.86 gauge galvanized steel

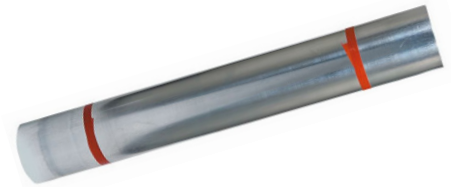
9" x 60'.....	10-40015
12" x 60'.....	10-40022



Galvanized Roll Roofing

Continuous roll, galvanized steel roofing
Available in any length, max width 14-1/2'

Special Order Item



Peal and Seal Aluminum Roofing

Self-adhering waterproof material with aluminum surface
Puncture resistant, 5-layer construction
Adheres to most surfaces, requires no top-coating

6" x 33.5'.....	60-70426
12" x 33.5' White.....	60-70425W
18" x 33.5'.....	60-70427
36" x 33.5'.....	60-70428



Cool King Economy Roof Coating

Bright, reflective fibered roof coating
Covers approximately 100 sq ft per gallon

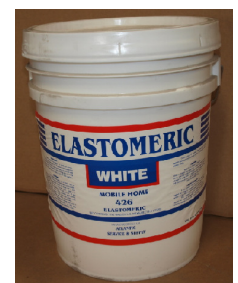
1 Gallon.....	60-7035
5 Gallon.....	60-7037



Economy Roof Coating

Fibered acrylic latex elastomeric roof coating
Provides superior covering over seams and small openings
Brilliant white reflective finish reduces heat buildup

5 Gallon.....	60-7185
---------------	---------



Exterior

Roofing Repair

Anvil Premium Roof Coating

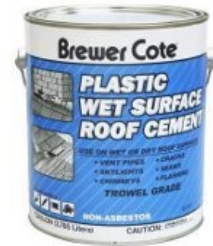
Fibred acrylic latex elastomeric roof coating
 Provides superior covering over seams and small openings
 Brilliant white reflective finish reduces heat buildup
 Can be applied over galvanized surfaces, no prep required



1 Gallon..... 60-7180
5 Gallon..... 60-7182

Wet Surface Roof Cement

Repairs wet or dry surfaces around flashings, vents, and seams
 Permanent seal blends in with existing roof coating



11 oz Cartridge..... 60-7114
Quart..... 60-7033
1 Gallon..... 60-7034
5 Gallon..... 60-70345

Anvil Patcher/Sealer

Heavy-bodied, flexible, elastomeric material
 Patches and seals masonry, stucco, concrete block and metal
 Fast drying, paintable



Gallon..... 60-7179

Roof Coating Brush

Wood or plastic block with 6 x 11 rows of bristles
 1-5/16" x 4" handle



Brush Head..... 60-7054
Brush Handle..... 60-70545

Easy Mixer

Mixes contents smoothly, lump free
 Use with insulated 3/8" drill
 24" length fits up to 5-gallon pails



Mixer..... 60-70405

Bottom Board

Polyethylene fabric coated with black polyethylene film
Provides positive moisture barrier
Not self-adhesive

48" x 600' Roll	60-70801
48" x 100' Boxed	60-70805
14' x 70' Boxed	60-70809



Bottom Board Repair

Use to attach bottom board to underside of home
Repairs small holes, tears

28" x 54' Boxed	60-70806
28" x 25' Boxed	60-70807



Bottom Board Tape

Seals bottom board to underside of home
Repairs small holes and tears in bottom board

4" x 180'	60-70805
------------------------	-----------------



Plastic Vapor Barrier

Use as close-off for secondary moves
Also used as moisture vapor barrier under home

14' x 300', 4-Mil	80-10930
16' x 100', 4-mil	80-1094
16' x 100', 6-Mil	80-10946



Exterior



**This page
intentionally left blank**